

R·M·D
KWIKFORM

Bringing
structures
to life



PRODUCT BROCHURE

**Superslim
Soldiers**

RMD Kwikform Bahrain



Product Overview

The Superslim Soldier is the definitive formwork primary beam. Robust and easily assembled into beams of almost any length, the Superslim Soldier can be used in numerous temporary works applications

Faster

- Standard fixtures and clamps ensure optimum on site efficiency.
- Formwork ties and other components can be fixed almost anywhere along the Superslim Soldier's length allowing for best on site productivity and optimum scheme design.
- Robust to cope with the demands of frequent reuse providing easy assembly and consistency for optimum fabrication on site.

Safer

- Manufactured from high yield steel to provide maximum load capacity.
- Proven performance from over 40 years on site.

Easier

- Compatible with all other RMD Kwikform product ranges make it extremely versatile.
- Huge range of standard accessories provide the versatility to tackle an almost limitless range of applications.



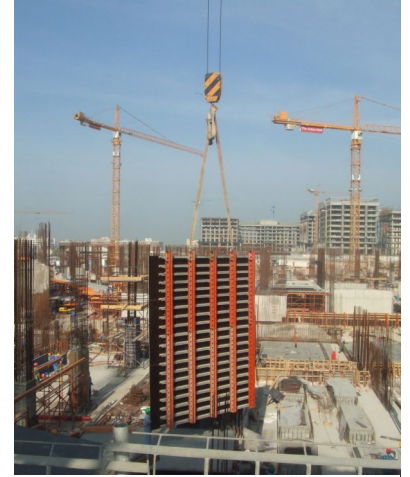


Applications

Available in nine lengths, and with a comprehensive range of accessories, the Superslim Soldier can be assembled into:

- Wall formwork panels of virtually any shape and size.
- Bridge cantilever edge and deck supports.
- Composite bridge deck formwork.
- Travelling gantries.
- Vertical and raking shores.
- Spanning beams and trusses.
- Support structures for temporary site buildings.
- Facade retention / space frames.





Features & Benefits

The Superslim Soldier has unrivalled strength-to-weight ratio, versatility and range of accessories and can be re-used on site after site, in numerous temporary works applications.

Any length of beam

Nine standard lengths, from 10mm to 3600mm, give almost unlimited scope for assembling beams of virtually any length.

Versatile

Versatility to tackle diverse applications demanded by major projects - gantries, shoring, spanning trusses and frames, as well as formwork panels.

Compatible

Fully compatible with other RMD Kwikform product ranges and, in many cases, with customers' own equipment.

Freedom to create

Complete freedom to create the optimum design, whatever the application.

Precisely manufactured

Combines maximum durability and load capacity with reduced unit weight.

Robust

Easy assembly and consistently accurate fabrication on-site allows Superslim Soldiers to be reused time and again.





In Detail



Can be Assembled into Practically Any Length

Because they can be assembled into practically any length, Superslim Soldiers are frequently used as raking push-pull props, as well as vertical shoring.



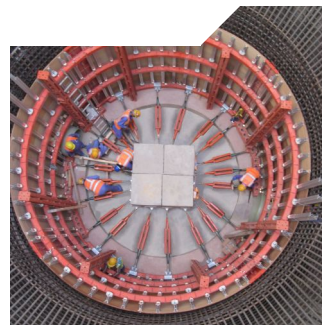
Ideal as Primary Beams

Superslim Soldiers are ideal as primary beams on shoring or scaffolding to support reinforced concrete slab construction.



Versatile Applications

Using system clamps, scaffold tube and other accessories, Superslim Soldiers can be assembled with ease into frames and trusses for façade retention, multi level supports to temporary site offices, cantilever supports, exhibition stands and film sets.



Range of other Formwork Configurations

When using a plywood form face together with one of RMD Kwikform's Aluminium or GTX secondary beams, Superslim Soldiers can be used to construct straight, curved, conical or other complex formwork configurations.



Projects



PROJECT
Shahama to Saadiyat Island
Freeway

REGION
MENA

STRUCTURES
Bridges, Roads



PROJECT
Lusail Tunnel, Qatar

REGION
MENA

STRUCTURES
Tunnels



PROJECT
Phosphate Hangar

REGION
Africa

STRUCTURES
Industrial, Mining



PROJECT
Arabian Ranches Interchange

REGION
MENA

STRUCTURES
Bridges, Roads



PROJECT
Wadi Dayqah Dam

REGION
MENA

STRUCTURES
Dams



PROJECT
Mafraq Interchange

REGION
MENA

STRUCTURES
Bridges, Roads

Components

Superslim Soldier Beams

Note: Superslim Soldiers are also available as galvanised.



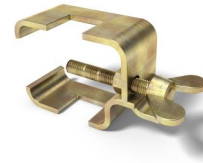
Code	Description	Weight
SSX10090	Superslim Soldier 90mm	7.32kg
SSX10180	Superslim Soldier 180mm	8.70kg
SSX10360	Superslim Soldier 360mm	11.98kg
SSX10540	Superslim Soldier 540mm	15.24kg
SSX10720	Superslim Soldier 720mm	18.74kg
SSX10900	Superslim Soldier 900mm	22.00kg
SSM11260	Superslim Soldier 1260mm	33.00kg
SSX11800	Superslim Soldier 1800mm	38.80kg
SSX12700	Superslim Soldier 2700mm	55.38kg
SSX13600	Superslim Soldier 3600mm	72.18kg
SSX10040	End Plate 10mm	2.91kg

Alform to Superslim Soldier Clamp



Code	Description	Weight
AFX20015	Clamp Assembly	0.21kg
AFX20022	M12 Unifix Bolt	0.05kg
BNX00012	Hex Nut - M12 Hex Gr8.8	0.01kg

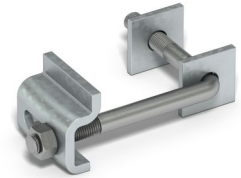
GTX to Soldier Clamp



Code	Description	Weight
GTX10001	GTX to Soldier Clamp Mk1A	0.6kg

Timber Waling Clamp Assembly

*Note: 2 qty required for assembly.



Code	Description	Weight
SSM00016	Timber Waling Clamp - Short	0.25kg
SSM00017	Timber Waling Clamp - Long	0.42kg

Universal Clamp



Code	Description	Weight
SSM00014	Universal Clamp	0.14kg

Components

'B' Clamp

SWL = 3.25kN / pair



Code	Description	Weight
RPX10005	'B' Clamp	0.7kg

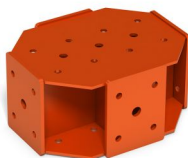
Slimshor Tube Clamp

SWL = 6.25kNm in slip / each



Code	Description	Weight
SSU10024	Slimshor Tube Clamp - Galvanised	1.3kg

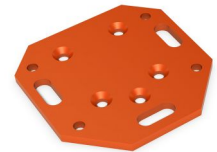
6-Way Connector



Code	Description	Weight
SSU20006	6-Way Connector	25.0kg

Anchor Plate

SWL = 70kN Tension / 90kN Shear



Code	Description	Weight
SSU10036	Anchor Plate	7.40kg

90 Degree Corner Angle



Code	Description	Weight
SSU10003	90 Degree Corner	8.66kg

Pivot Cleat Set

Range = 55 degrees min, 220 degrees max



Code	Description	Weight
SSU10028	Pivot Cleat Set	8.75kg

Components

Corner Pivot

SWL = 65kN / Pivot



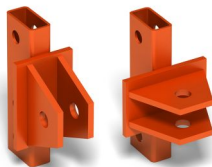
Code	Description	Weight
SSU10019	Corner Pivot	7.29kg

End Plate Adaptor



Code	Description	Weight
SSM00020	End Plate Adaptor	1.0kg

Strut Adaptors



Code	Description	Weight
SSM00006	Strut Adaptor	5.0kg
SSM00069	Strut Adaptor 90 deg	5.0kg

Prop Spade End Link & Prop Pivot Tube

SWL = 65kN (SWL can be restricted by the length of the Push-Pull Prop)



Code	Description	Weight
SSU10012	Prop Spade End Link	3.09kg
SSU10004	Prop Pivot Tube	1.81kg

Tilt Plate

SWL = 100kN



Code	Description	Weight
SSU10034	Tilt Plate	4.81kg

Prop Jacks Left & Right Hand

Adjustable Range = 405 - 635mm. SWL = +/-100kN



Code	Description	Weight
SSU10007	Prop Jack - Left Hand	14.48kg
SSU10008	Prop Jack - Right Hand	14.48kg

Components

Lifting Plate

SWL = 30kN / pair



Code	Description	Weight
SSU10032	Lifting Plate	3.19kg
SSX10046	Superslim 19mm pin & clip	0.22kg

Spreader Beam Adaptor

SWL = 30kN / Unit



Code	Description	Weight
SSX10052	Spreader Beam Adaptor	9.35kg
SSU10004	Tube - Prop Pivot	1.81kg

Support Plate

SWL = 10kN



Code	Description	Weight
SSX10042	Support Plate	5.3kg
BNU16001	Nut - M16 Hex Gr8.8	0.03kg
BNU16007	Set Pin - M16 x 40 Gr8.8	0.08kg

Turnbuckles



Code	Description	Weight
SSM00912	Short Turnbuckle 1 (Orange). Range = 915 - 1220mm	7.0kg
SSM01417	Superslim Turnbuckle 2 (Green). Range = 1400 - 1710mm	10.6kg
SSM01518	Superslim Turnbuckle 3 (Blue). Range = 1520 - 1830mm	11.3kg
SSM01922	Superslim Turnbuckle 4 (Brown). Range = 1915 - 2225mm	13.4kg
SSM02225	Superslim Turnbuckle 5 (White). Range = 2200 - 2510mm	15.0kg

Access Bracket

SWL on the Bracket = 3.2kN
UDL



Code	Description	Weight
SSU10031	Access Bracket	6.65kg

Plumbing Jack

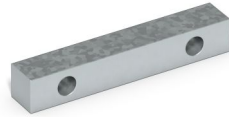


Code	Description	Weight
SSM00019	Plumbing Jack. Range = 70 - 200mm	5.2kg

Components

Joint Stiffeners

SWL = 20kNm Bending / 150kN Tension



Code	Description	Weight
SSU10010	Joint Stiffener - Galvanised	1.44kg
BNU16013	Bolt - M16 x 110 Gr8.8	0.20kg
BNU16001	Nut - M16 Hex Gr8.8	0.03kg

Porthole Bearing

SWL = 60kN in Tension



Code	Description	Weight
SSX10039	Porthole Bearing - Galvanised	2.00kg
BTX10017	Rapid Tie Nut - Hexagon 50mm	0.16kg

Fixed Strut & Adaptor



Code	Description	Weight
SSM00007	Fixed Strut Adaptor	16.0kg
SSM00008	Fixed Strut 2896mm	39.0kg

Single Sided Beam



Code	Description	Weight
SSM10540	Single Sided Beam 540mm	16.0kg

Single Sided Corner



Code	Description	Weight
SSM00001	Single Sided Corner 540 x 540mm	30.0kg



Services

Our value added services set us apart...

Consultancy & Design

Our technical sales staff will work with you to identify project requirements, analyse formwork options, planning, design and safety specifications. Early involvement ensures the best results.

Engineering Expertise

Our experienced engineering design staff will translate your requirements into cost effective formwork and shoring design solutions, tailored to the exacting needs of the project. By combining our designers knowledge, flair and experience of the capabilities of our equipment range, the systems we design are innovative, practical and cost effective.

Technological Advancements

RMD Kwikform is proud to be leading the way in the development of technological support. Integrating 3D CAD design throughout the business, coupled with in house design programs specifically for RMD Kwikform products, our customers can now benefit from seeing their vision come to life. We can translate complicated requirements quickly and easily.

On Site Technical Assistance

Trained Site Assistance Technicians can be on hand to provide practical guidance on how best to utilise our equipment in a safe and efficient manner, as well as provide solutions for required design variations due to on site conditions.

Equipment Availability

With dedicated equipment storage yards throughout the Middle East, RMD Kwikform can respond quickly and easily to our customers requirements. With access to the extensive regional network, our customers are able to benefit from availability, flexible delivery and improved equipment storage. A high quality fleet, delivered when its needed, on time, in full.

Live Demonstrations & Training Facilities

RMD Kwikform Middle East is able to provide customers with product demonstrations, allowing a more detailed understanding of the benefits our equipment can provide. We also offer hands-on practical training in the safe and efficient use of our products, undertaken either at our demonstration facilities or on our customers site ensuring they have all the knowledge they need to work safely with our equipment on site.



Contacts

RMD KWIKFORM BAHRAIN

BAHRAIN OFFICE

PO Box 21475, Flat 34, Building 5, Road 3001, Block 330, Bu Qhazal, Kingdom of Bahrain
Tel: +973 1738 2724
Fax: +973 1738 2624
Email: rmdbahrain@rmdkwikform.com

WORLDWIDE CONTACTS

RMD KWIKFORM UNITED KINGDOM

Tel: +44 1922 743743
Email: info@rmdkwikform.com

RMD KWIKFORM HONG KONG

Tel: +852 2415 4882
Fax: +852 2745 0232
Email: rmd.hongkong@rmdkwikform.com

RMD KWIKFORM UAE

Tel: +971 6 553 4173
Fax: +971 6 553 4327
Email: rmd.uae@rmdkwikform.com

RMD KWIKFORM SAUDI ARABIA

Tel: +966 13 896 8665
Fax: +966 13 896 8664
Email: rmd.ksa@rmdkwikform.com

RMD KWIKFORM USA

Tel: +1 303 252 7000
Fax: +1 303 252 7319
Email: usa@rmdkwikform.com

RMD KWIKFORM ESPAÑA

Tel: +34 91 555 6104
Fax: +34 91 555 4745
Email: rmd.madrid@rmdkwikform.com

RMD KWIKFORM COLOMBIA

Tel: +57 321 214 71 18
Email: rmd.bogota@rmdkwikform.com

RMD AUSTRALIA

Tel: +61 (08) 8179 8200
Fax: +61 (08) 8179 8201
Email: rmd.australia@rmdformwork.com

RMD KWIKFORM ASIA PACIFIC

Tel: +63 917 5266760
Email: hamish.bowden@rmdkwikform.com

RMD KWIKFORM QATAR

Tel: +974 4465 3034
Fax: +974 4465 3282
Email: rmd.qatar@rmdkwikform.com

RMD KWIKFORM INDIA

Tel: +91 44 6693 3300
Email: rmd.india@rmdkwikform.com

RMD KWIKFORM SOUTH AFRICA

Tel: +27 12 004 1000
Email: info.sa@rmdkwikform.com

RMD KWIKFORM DBME

Tel: +973 1738 2724
Fax: +973 1738 2624
Email: rmd.me@rmdkwikform.com

RMD NEW ZEALAND

Tel: +64 9 259 0353
Email: rmd.auckland@rmdkwikform.com

RMD KWIKFORM PHILIPPINES

Tel: +632 696 7635
Fax: +632 661 6456
Email: rmd.manila@rmdkwikform.com

RMD KWIKFORM OMAN

Tel: +968 2413 7828
Fax: +968 2413 7998
Email: rmd.oman@rmdkwikform.com

RMD CHILE

Tel: +56227149800
Email: rmd.chile@rmd.cl

RMD KWIKFORM IRELAND

Tel: +353 (0)1 830 2500
Fax: +353 (0)1 830 2741
Email: info@rmdkwikform.com

RMD KWIKFORM PANAMA

Tel: +507 280.0869
Email: rmd.panama@rmdkwikform.com

www.rmdkwikform.com

Our policy is one of continuous improvement and we reserve the right to change, alter or modify any detail, design, capacity, weight, dimension or code without prior notice being given.
The arrangements of equipment shown in photographs may have been assembled by others and therefore not reflect current best working practices or legislation requirements.
An Interserve Company